

# RANCHO ABREGO II



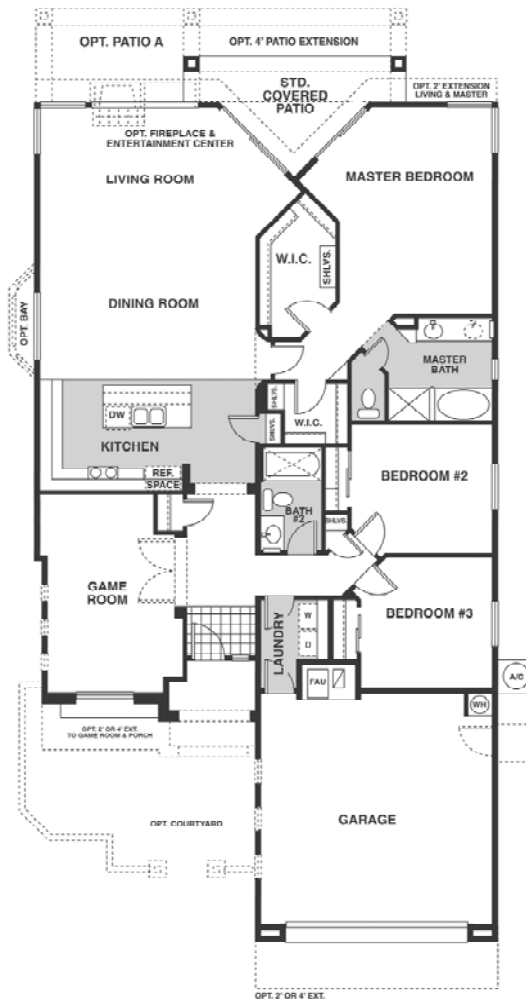
## QUICK MOVE-IN HOME (Lot 18)

- Plan: 2000 B (Flores)
- Square Feet: 2080
- 4 Bedroom, 3 Bath

**TOTAL PRICE INCLUDING  
DESIGNflex POSSIBILITIES:**

**~~\$231,742~~ \$189,990\***

- Gas fireplace at great room
- Ceramic tile at all wet & high traffic areas
- Optional bedroom 4 with double door entry
- 36" upper kitchen cabinets
- 2' expansion to rear of house
- 2' expansion to garage
- Upgraded interior door hardware package
- Brass floor outlet at great room
- 2 sinks at master bath
- Decora switches
- Extra hose bib
- 5 ceiling fan pre-wires
- 5 TV jacks
- 6 telephone jacks



**Contact our Sales Associates for more information at 520-625-8332.**

\*Price valid with use of preferred lender or cash purchase.

Renderings and floor plans are artist's conceptions only. Actual construction may vary. Plans, prices, options and features are subject to change without notice. Additional lot premiums may apply. Square footage and dimensions are approximate.

EFFECTIVE: 4/2/09

**PEPPER VINER HOMES**

*More Choice. More Quality. More Home.*



sahba

Energy Advantage Plus