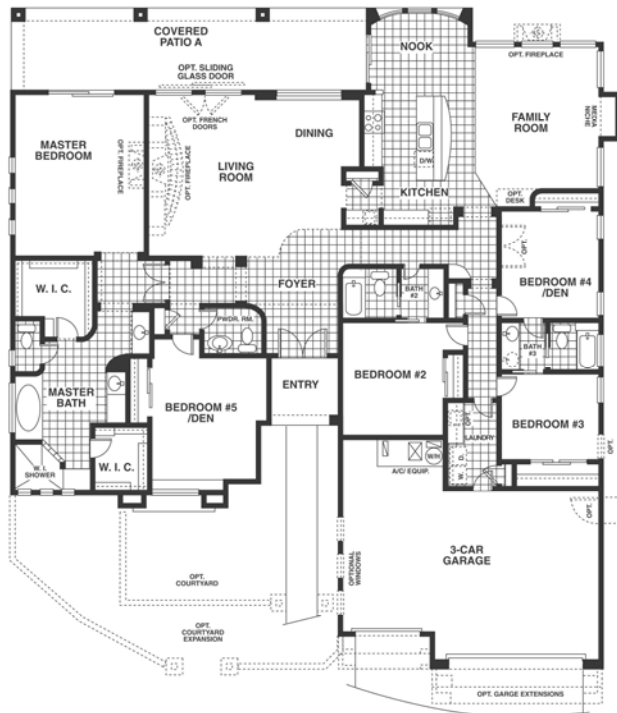


SYCAMORE CANYON



QUICK MOVE-IN HOME (Lot 466)



- Plan: 3500 B (Ruby)
- Square Feet: 3500
- 5 Bedrooms, 3.5 Bath

TOTAL PRICE INCLUDING DESIGNflex POSSIBILITIES:

~~\$490,025~~ - \$399,990*

- 20"x20" Ceramic Tile at Entry, Family, Kitchen, Hallways, Baths, & Laundry
- 2-Sided Exterior Wall Fireplace at Family Room
- 3-Car Garage with 2' Expansion
- 42" Upper Maple Kitchen Cabinets
- Wall Oven/Cooktop Layout
- Granite Kitchen Countertops
- Stainless Steel Appliances
- 2" Crown Molding at Kitchen
- Coralais Pull-out Kitchen Sink Faucet
- Desk with Granite Countertops & 42" Upper Cabinets
- 8' Interior Doors
- Plumbing for Future Wet Bar Sink
- Laundry Countertop, Cabinets, & Sink
- Glass Block Window at Master Tub
- Surround Sound Pre-wire
- Recirculation System
- Soft Water Loop
- Gas Line to BBQ
- Extra Hose Bib
- R-38 Ceiling Insulation
- 2 Exterior Ceiling Fan Pre-wires
- 2 Double Flood Lights
- 2 Brass Floor Outlets at Family Room
- Exterior Keyless Entry Pad for Garage
- Garage Service Door
- 2 Tilt-out Trays at Kitchen Sink
- 4 Additional Roll-out Trays in Kitchen

Call Sales Associates for more information at 520-762-0232.

*Price valid with use of preferred lender or cash purchase.

Renderings and floorplans are artist's conceptions only. Actual construction may vary. Plans, prices, options and features are subject to change without notice. Additional lot premiums may apply. Square footage and dimensions are approximate.

EFFECTIVE: 2/17/09

PEPPER VINER HOMES

More Choice. More Quality. More Home.

